



examverse

## Quick Start Guide

For Students

v1.1



# Table of Contents



Kindly continue reading, or click on a link to get directly to a specific section.

• <a href="#">Account Activation and Login Examverse</a>	3
• <a href="#">Welcome to the Examverse Dashboard</a>	4
• <a href="#">Support</a>	5

## Assessments on web browsers

• <a href="#">Examination Invitation</a>	6
• <a href="#">Waiting for the assessment to commence</a>	7
• <a href="#">How to access the assessment</a>	8
• <a href="#">Sitting the assessment</a>	9
• <a href="#">Submitting your assessment</a>	11
• <a href="#">Scoring the assessment</a>	12

## Assessments within the 3D Organon platform Desktop/Tablet

• <a href="#">Examination Invitation</a>	14
• <a href="#">3D Organon installation instructions</a>	15
• <a href="#">The 3D Organon Lobby</a>	16
• <a href="#">The 3D Organon Examverse Dashboard</a>	17
• <a href="#">Example of an Anatomy 3D Question</a>	18
• <a href="#">Example of a Multiple-choice Question</a>	19
• <a href="#">Example of a True/False Question</a>	20
• <a href="#">Submitting the assessment for evaluation</a>	21

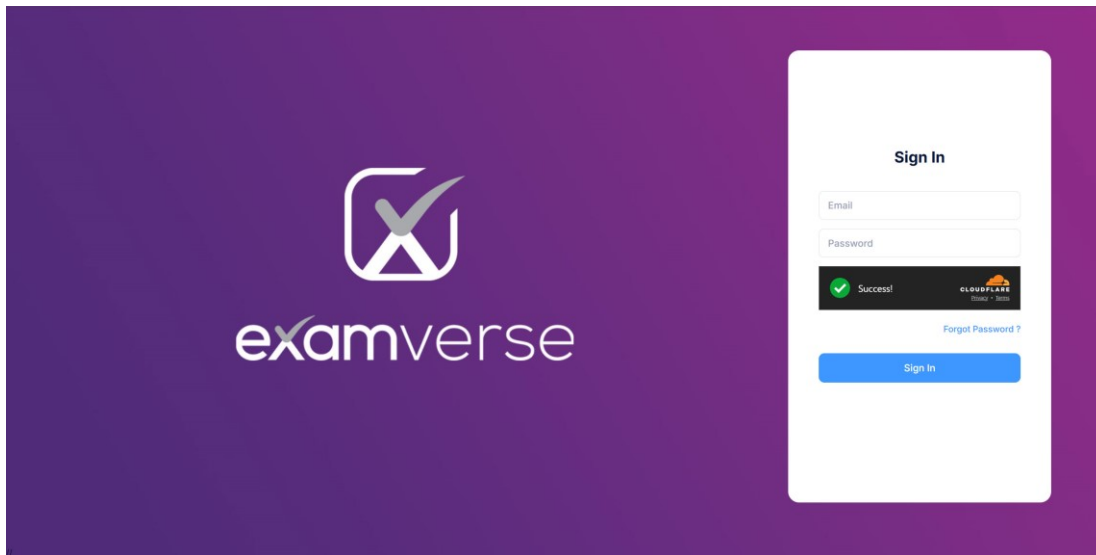
## Assessments within the 3D Organon XR platform Virtual Reality (VR)

• <a href="#">Examination Invitation</a>	23
• <a href="#">3D Organon XR installation instructions</a>	24
• <a href="#">The 3D Organon XR Lobby</a>	25
• <a href="#">The 3D Organon XR Examverse Dashboard</a>	26
• <a href="#">Example of an Anatomy 3D Question</a>	27
• <a href="#">Example of a Multiple-choice Question</a>	28
• <a href="#">Example of a True/False Question</a>	29
• <a href="#">Submitting the assessment for evaluation</a>	30

# Account Activation and Login Examverse



- ❑ Once your institution registers you as a new member on the Examverse assessment platform, you will receive an email titled "**Invitation to Join Examverse Assessment Platform.**" This email will include details about your assigned cohort and your default password (123456). For security reasons, we highly recommend changing your password after your first login.
- ❑ Additionally, you will receive emails and invitations from Examverse, including new examination notifications, sent by your institution's assessment team.



Please click the link below to log in to the Examverse platform:  
<https://examverse.3dorganon.com/login>

## Sign In

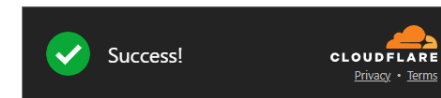
Email

Password

### Login Credentials

**Username:** *your email*

**Password:** *123456 (you can reset it [here](#))*



[Forgot Password ?](#)

Cloudflare verifies that users are human without requiring interaction.

Sign In

**Note:** If you experience any difficulties logging in, please contact our Customer Support Team at [support@3dorganon.com](mailto:support@3dorganon.com).

# Welcome to the Examverse Dashboard



Server Time: 18-Mar-2025 17:28:16 (GMT+02:00)

## Welcome to Examverse Dashboard

Home - Welcome to Examverse Dashboard

- Dashboard
- Exams
- Support

Categories you can choose from.

Verify the date and time of your upcoming assessments.


View your completed assessments.



Hello

James

Click here so you can Sign Out or change your Account Settings.

  
Change your Theme (Light, Dark).

### Upcoming Assessments

#ID ▾	TITLE	ASSESSMENT TIME	PRACTICE
318	Anatomy Questions	28/Mar/2025 16:05	No

< 1 >

### Completed Assessments

#ID ▾	TITLE	ASSESSMENT TIME	PRACTICE	ACTIONS
334	Anatomy Practice Questions	01/Mar/2025 16:05	No	-
335	Gross Anatomy	18/Mar/2025 17:00	No	-

< 1 >



Support Tickets

Home - Support Tickets

Please create a ticket if you require any support related to Examverse. You can also use the same option to provide us with feedback.

Q Search by ticket id, st

Category Show All Status Show All

Q Search

Reset

+ Create Ticket

TICKET ID	CATEGORY	SUBJECT	DESCRIPTION	STATUS	CREATED AT	ACTION
QWFAYZEG	Generic Support	Password Reset	Could you please guide me on how to reset the pass...	Open	08-05-2025 03:09 PM	Actions
U1V4TJS9	Generic Support	Examination Passphrase	Could you please let me know where I can get the E...	Open	08-05-2025 03:05 PM	Actions

<

1

>

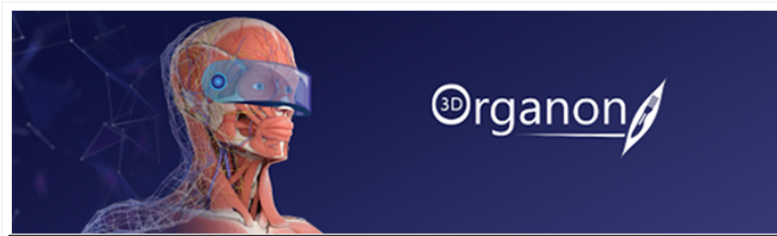
Click on 'Actions' to view or delete your ticket.

# Examination Invitation



- ❑ You will receive a new email titled "**New Examination Invitation.**" Click the link in that email to launch the exam in your web browser.
- ❑ To start the exam, use the passphrase provided in a second email titled "**Examination Passphrase.**"

## New Examination Invitation.



Hello **James**,

We hope this email finds you well. We would like to inform you that a new assessment has been set up by your institution. Please check the exam details below.

Exam Title: Gross Anatomy

Date: 18-Mar-2025

Time: 05:00:00 PM (Europe/Athens)

Duration: 30 minutes

Exam Link: [Click Here](#)

Please make sure to mark your calendars and prepare accordingly for the upcoming examination. We encourage you to review the exam material and reach out to your instructors if you have any questions or concerns.

If you encounter any technical issues or have questions regarding the examination setup, please check the Knowledge Base section on our webpage.

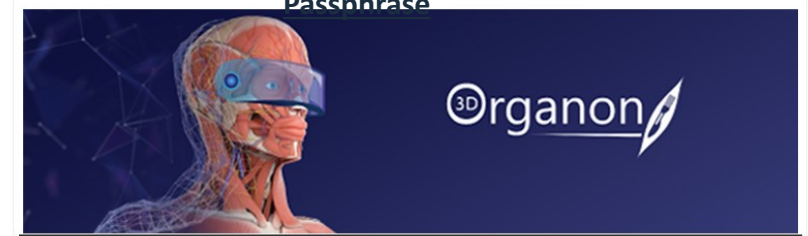
Wishing you all the best in your preparations and performance on the upcoming examination.

Regards,

The Examverse Team

To commence the exam, click on the **Exam link.**

## Examination Passphrase



Hello **James**,

We are pleased to provide you with the examination **unlock passphrase**. Please note that this passphrase should remain confidential and should not be shared with anyone.

Exam Title: Gross Anatomy

Examination Unlock Passphrase: **iArSym**

This passphrase will grant you access to the examination at the designated time. We kindly ask that you keep it secure and do not share it with anyone to ensure the integrity of the examination process.

If you have any questions or concerns regarding the examination or the passphrase, please feel free to contact us.

Wishing you the very best of luck on your examination!

Regards,

The Examverse Team

You will need to enter the **passphrase** to start the examination.

# Waiting for the assessment to commence



examverse

Help ?

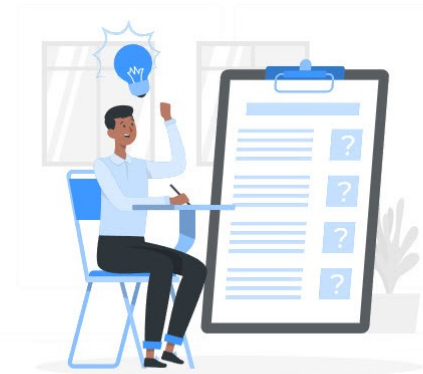


Check the time remaining until the assessment begins.

## Your Assessment Gross Anatomy

will start in

00 : 08 : 02



# How to access the assessment



examverse

Help ?



Type the [passphrase](#) you received via email.

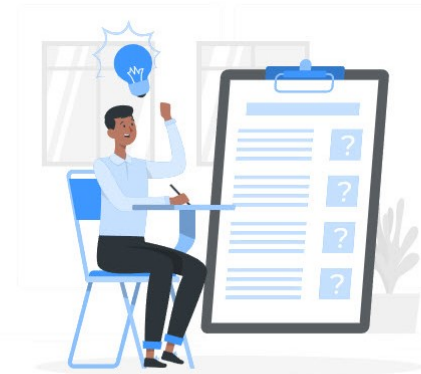
Gross Anatomy

**You are about to enter the Assessment.**

Please type in the passphrase provided to you to unlock the assessment.

Enter Passphrase

START EXAM





# Sitting the assessment



1 2 3 4 5 6 7

## Question 1 / 7

Which of the following is a cranial bone?

- ☐ Vomer bone
- ☐ Lacrimal bone
- ☐ Sphenoid bone
- ☐ Zygomatic bone
- ☐ Palatine bone

Next →

Remaining time

00 : 28 : 25

Submit

Pick the correct answer by checking the box, then click “Next” to move on to the next question.

Be sure to monitor the remaining time. Once the time expires, the assessment will automatically lock.

# Sitting the assessment



examverse

Help ?



1 2 3 4 5 6 7

Next →

## Question 2 / 7

Remaining time

00 : 28 : 00

Fill in the blanks pertaining to the Internal oblique abdominal muscle:

both sides (bilateral action): compress abdominal wall &  vertebral column

one side (unilateral action): laterally flex vertebral column &  torso to the opposite side

Click on the blank space to begin typing your answer. The green underline will turn blue, indicating that your input is being recorded correctly.

Click on 'Submit' once you have completed the examination.

Submit

# Submitting your assessment



examverse

Help ?



1 2 3 4 5 6 7

Question 1 / 1

Remaining time

00 : 27 : 32

Which of the following is a cranial bone?

- ☐ Vomer bone
- ☐ Lacrimal bone
- ☒ Sphenoid bone
- ☐ Zygomatic bone
- ☐ Palatine bone



Are you ready to submit your assessment for grading?

Yes!

No

Once you click "Yes" the assessment will be complete and will be sent for grading.

Submit

# Scoring the assessment



The assessment results will only be visible if the institution has configured the assessment to allow this. Otherwise, the institution will communicate the results separately.

**Your assessment is completed and submitted for review.**

**You will receive an email notification when the results are ratified and released.**

**Thank you!**

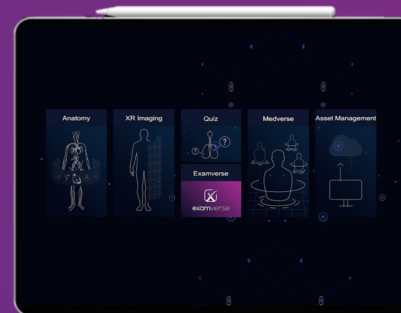
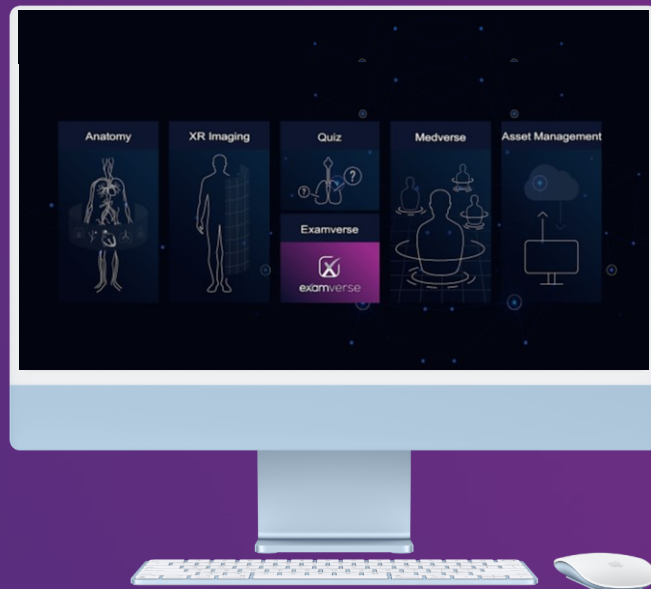
Ok, Go home



## Assessments within the 3D Organon platform

### Desktop/Tablet

**Examverse allows your institution's assessment team to create examinations that require the use of the 3D Organon environment on desktop and tablet platforms.** This integration enables the design of assessments that leverage interactive 3D anatomical models, offering students a more immersive and clinically relevant testing experience.



# Examination Invitation



- ❑ You will receive an email titled "**New Examination Invitation**" with details about the date and time of your upcoming assessment.

## New Examination Invitation.



Hello **James**,

We hope this message finds you well. We are excited to inform you that a new assessment has been set up by your institution, which will take place within the 3D Organon platform

Exam Title: Anatomy II

Date: 29-Apr-2025

Time: 05:55:00 PM

Duration: 60 minutes

To participate, please log in to the 3D Organon app using your credentials and navigate to the exam section. Ensure that you are familiar with the app interface beforehand to make the examination process smooth and efficient.

Please make sure to mark your calendars and prepare accordingly for the upcoming examination. We encourage you to review the exam material and reach out to your instructors if you have any questions or concerns.

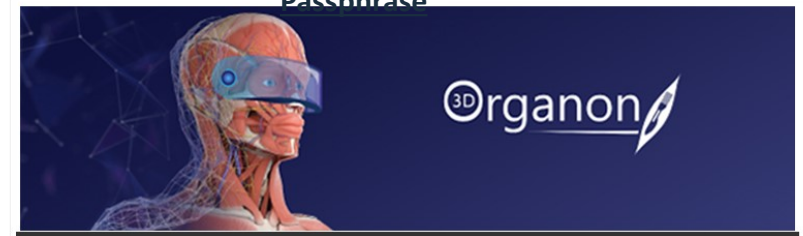
For any technical issues or inquiries about the examination setup, please visit the Knowledge Base section on our webpage or contact our support team directly.

We wish you the best of luck in your preparations and look forward to your successful performance in this innovative examination experience!

Warm regards,

The Examverse Team

## Examination Passphrase



Hello **James**,

We are pleased to provide you with the examination **unlock passphrase**. Please note that this passphrase should remain confidential and should not be shared with anyone.

Exam Title: Gross Anatomy

Examination Unlock Passphrase: **lArSym**

This passphrase will grant you access to the examination at the designated time. We kindly ask that you keep it secure and do not share it with anyone to ensure the integrity of the examination process.

If you have any questions or concerns regarding the examination or the passphrase, please feel free to contact us.

Wishing you the very best of luck on your examination!

Regards,

The Examverse Team

You will need to enter the **passphrase** to start the examination.

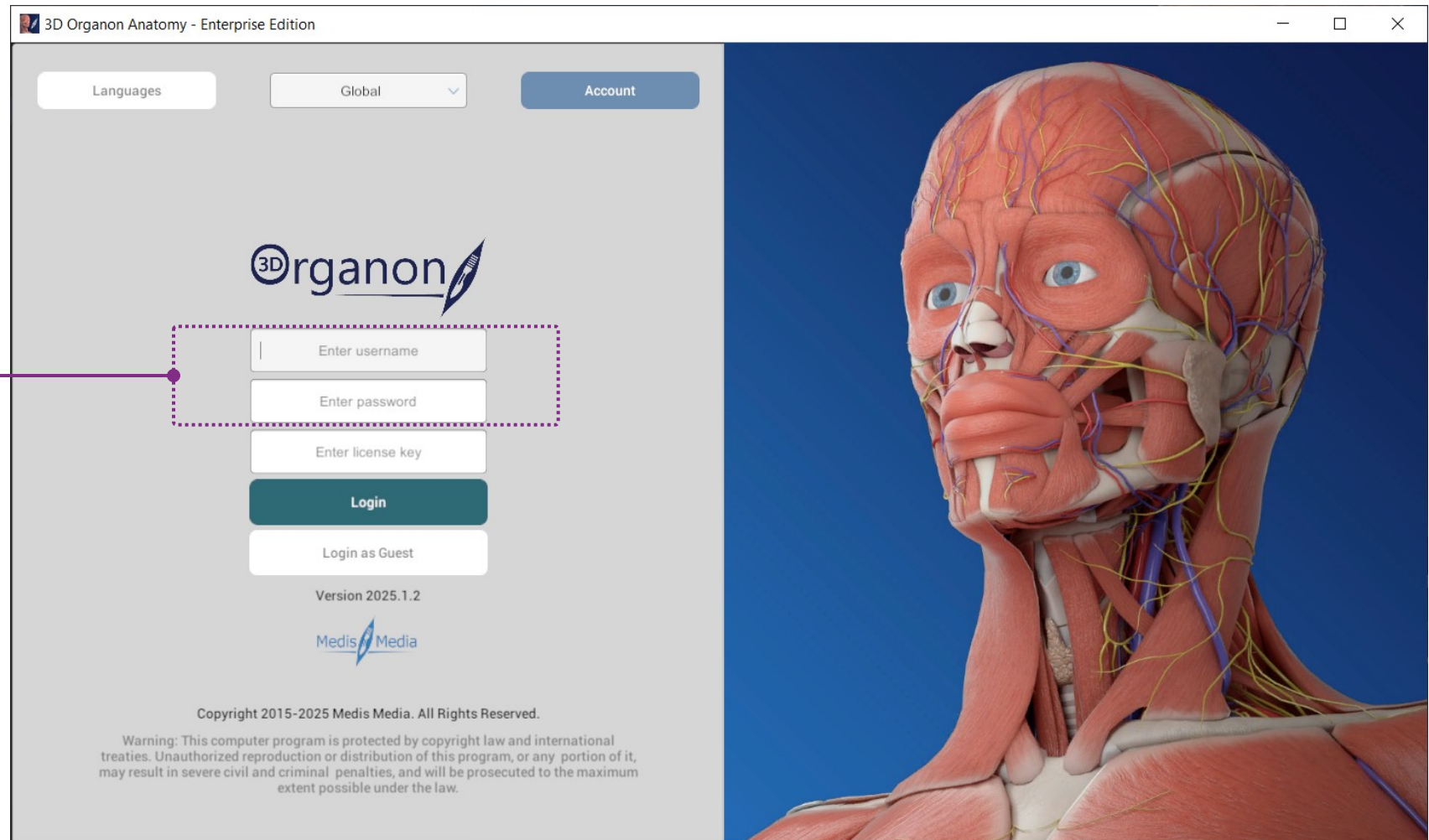


# 3D Organon installation instructions

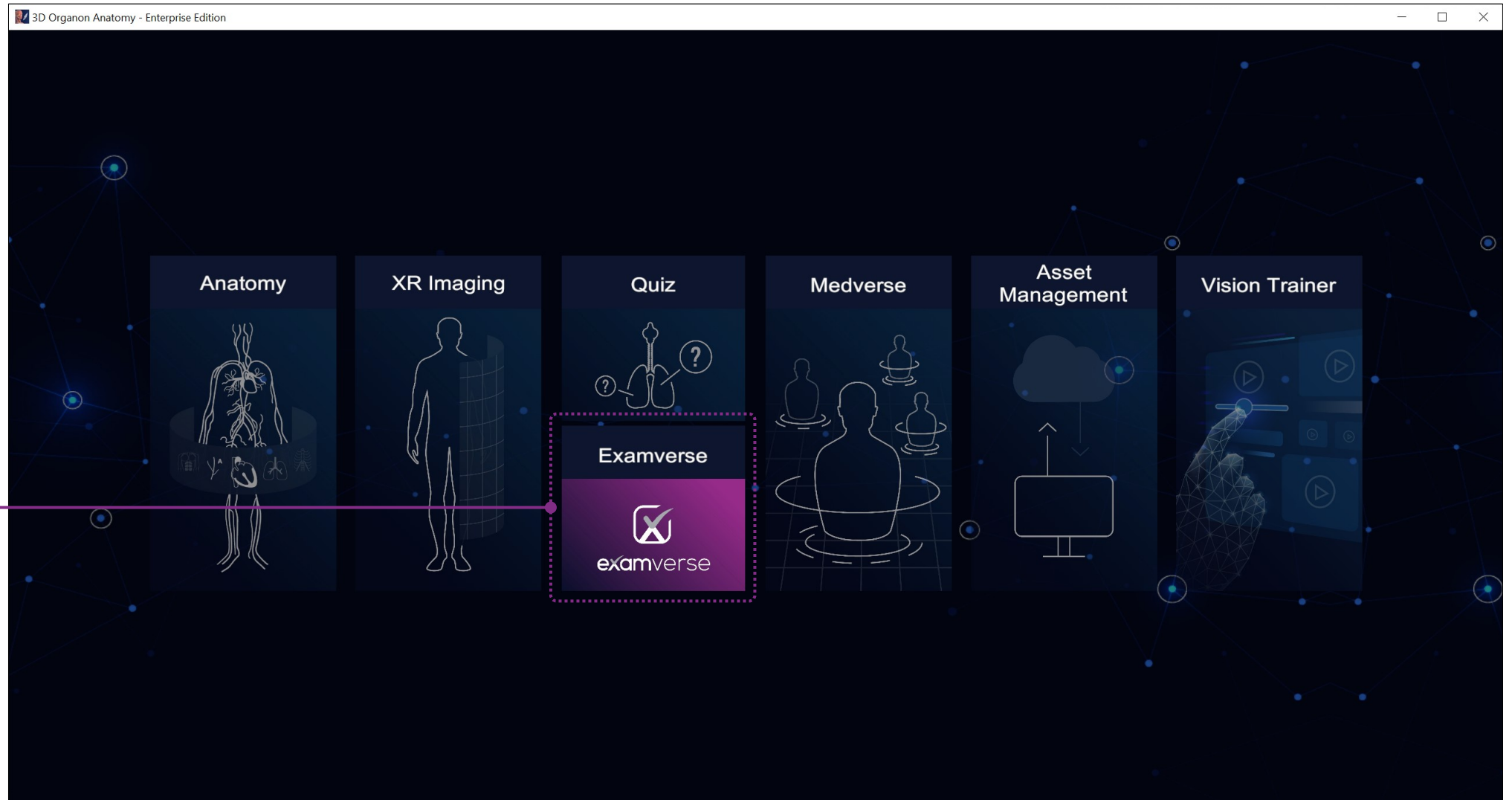


- ❑ To get started, follow the installation instructions [here](#).
- ❑ Once installed, launch 3D Organon and log in with your email and password (no license key is required).

Your login credentials are the same as those used for the Examverse platform. Click [here](#) for more details.



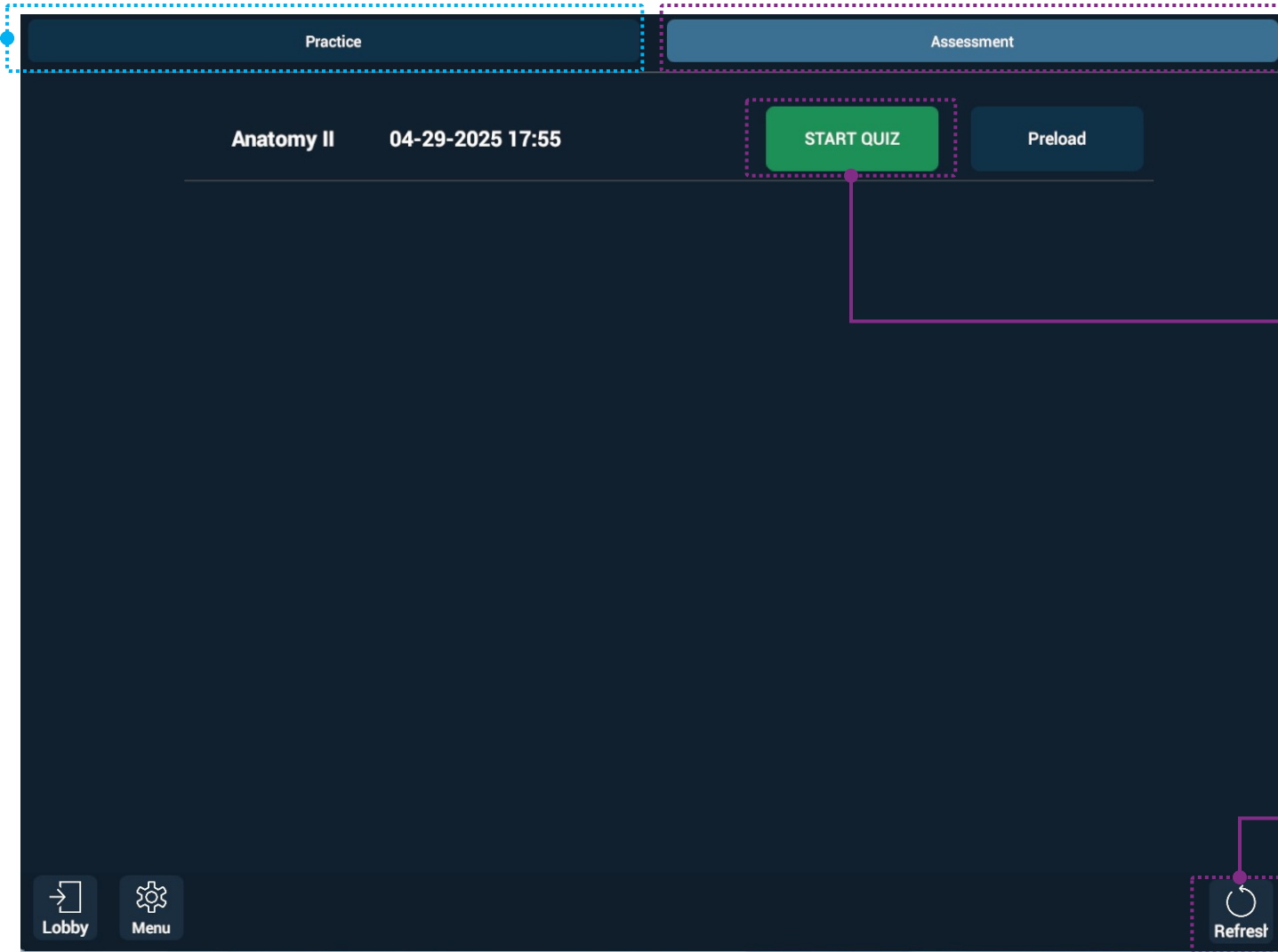
# The 3D Organon Lobby



Click the Examverse module to access the 3D Organon Examverse Dashboard.



# The 3D Organon Examverse Dashboard



Practice tests assigned by the institution have open-time access.

Click on "**Assessment**" to view all active assessments.

Click "**Start Quiz**" to begin the quiz.

Click "**Refresh**" to load the latest assessment.

# Example of an Anatomy 3D Question



3D Organon Anatomy - Enterprise Edition

00: 17 : 13 Question 1/5

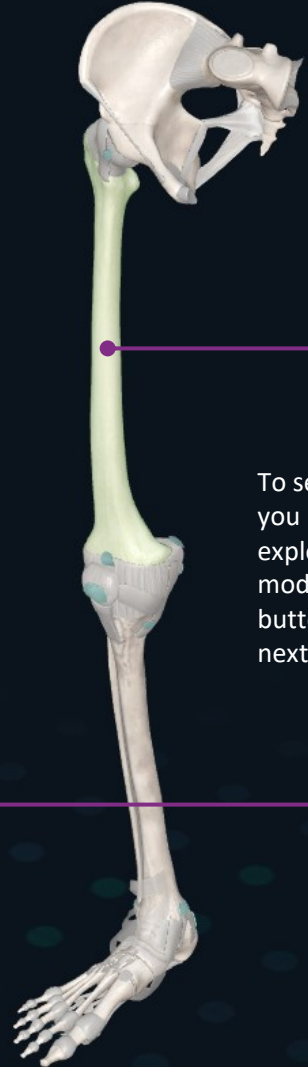
Answer is applied

What bone occupies a lateral position in the leg?

- Tibia
- Navicular
- Femur
- Fibula, R
- Talus

PREVIOUS APPLY ANSWER NEXT

Hide Back SUBMIT



examverse

Always check the remaining time and the number of unanswered questions.

Each question includes a stem, a lead-in, and distractors. Distractor options are provided for reference only.

There are questions where further exploration and virtual dissection is required. First click on a structure and then click on the “Hide” button (as many times as needed) to expose deeper anatomical structures for selection.

To select the potential correct answer, you need to perform an interactive exploration, select a structure on the model and press the ‘APPLY ANSWER’ button. Then by clicking ‘NEXT’ the next question appears.

# Example of a Multiple-choice Question



3D Organon Anatomy - Enterprise Edition

Question 2/5

00:14:34

SUBMIT

From what bone does the sternocleidomastoid originate?

Select the correct answer, then click 'NEXT' to proceed to the next question.

- A. Temporal
- B. Occipital
- C. Parietal
- D. Sphenoid
- E. Zygomatic

PREVIOUS

NEXT

# Example of a True/False Question




3D Organon Anatomy - Enterprise Edition

Question 3/5

00:12:46

SUBMIT

Select the correct answer, then click 'NEXT' to proceed to the next question.



1 ☒ true ☐ false The kneecap is known as the patella.

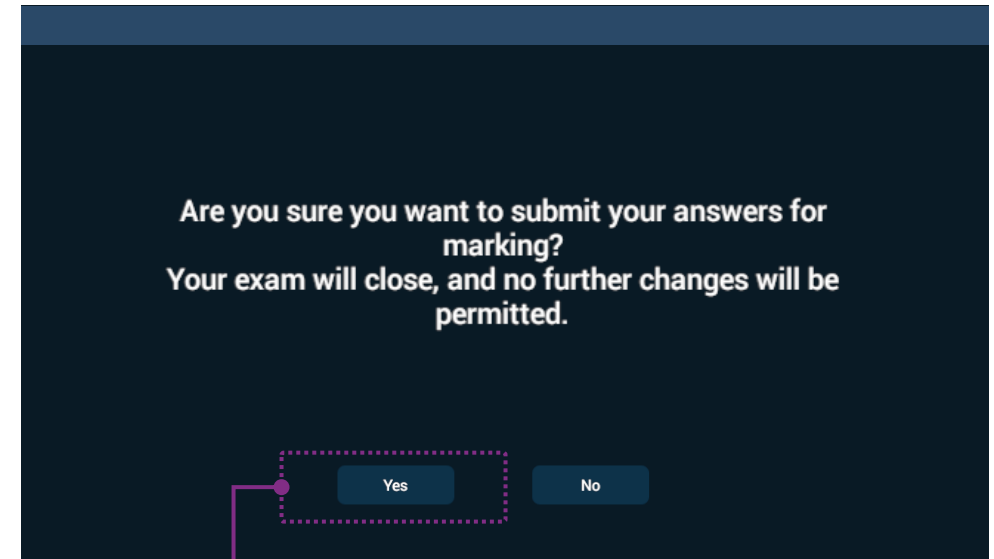
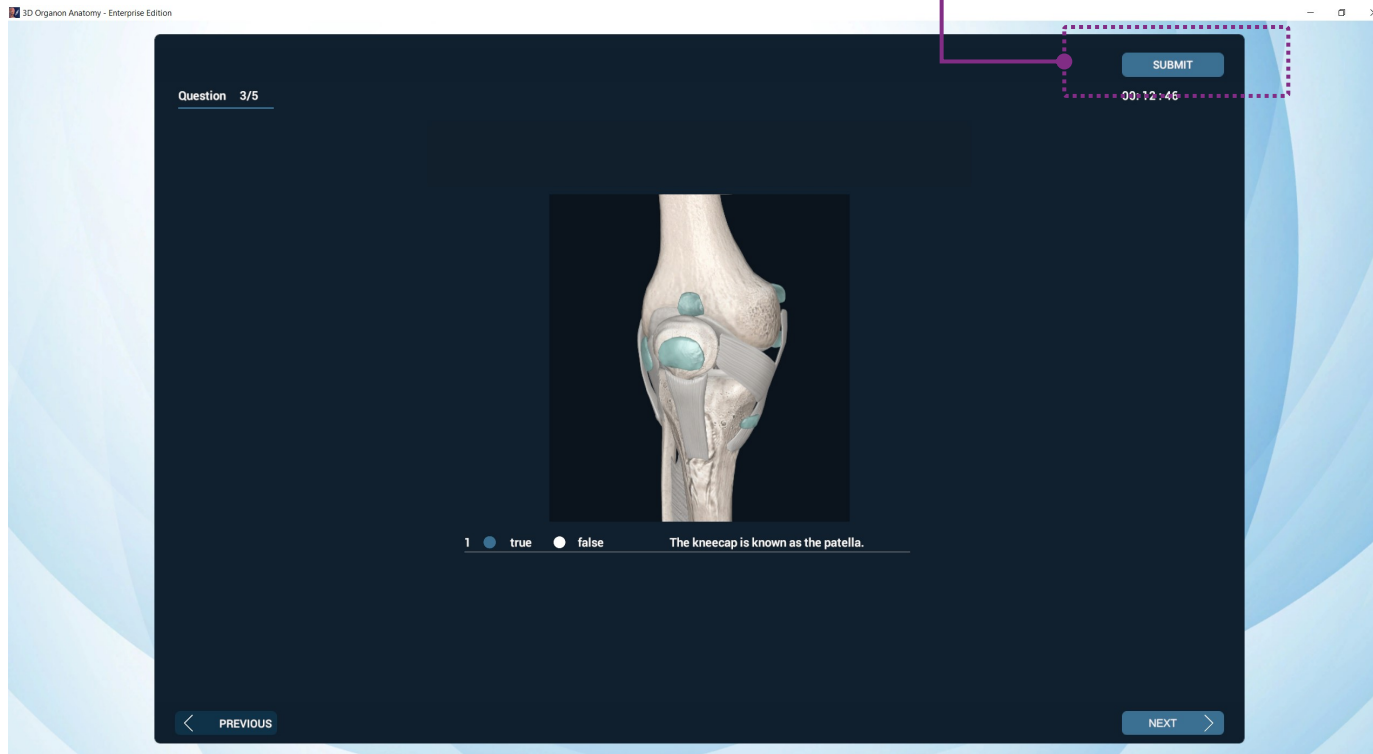
PREVIOUS

NEXT

# Submitting the assessment for evaluation



When ready to finalize the Quiz, just click on the '**SUBMIT**' button.



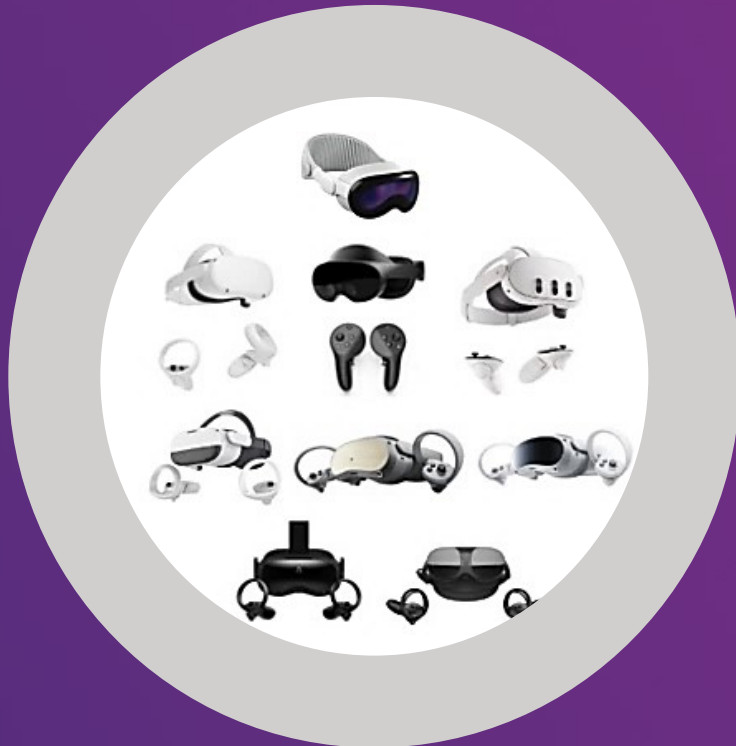
In the pop-up message, click '**Yes**' to submit your answers.



## Assessments within the 3D Organon XR platform

Virtual Reality headsets

Leveraging immersive 3D visualization



**Examverse allows your institution's assessment team to create examinations that require the use of the 3D Organon XR environment in Virtual Reality (VR).** This integration enables the design of assessments that leverage interactive 3D anatomical models, offering students a more immersive and clinically relevant testing experience.

# Examination Invitation



- ❑ You will receive an email titled "**New Examination Invitation**" with details about the date and time of your upcoming assessment.

## New Examination Invitation.



Hello **James**,

We hope this message finds you well. We are excited to inform you that a new assessment has been set up by your institution, which will take place within the 3D Organon platform

Exam Title: Anatomy V

Date: 30-Apr-2025

Time: 05:32:00 PM

Duration: 120 minutes

To participate, please log in to the 3D Organon app using your credentials and navigate to the exam section. Ensure that you are familiar with the app interface beforehand to make the examination process smooth and efficient.

Please make sure to mark your calendars and prepare accordingly for the upcoming examination. We encourage you to review the exam material and reach out to your instructors if you have any questions or concerns.

For any technical issues or inquiries about the examination setup, please visit the Knowledge Base section on our webpage or contact our support team directly.

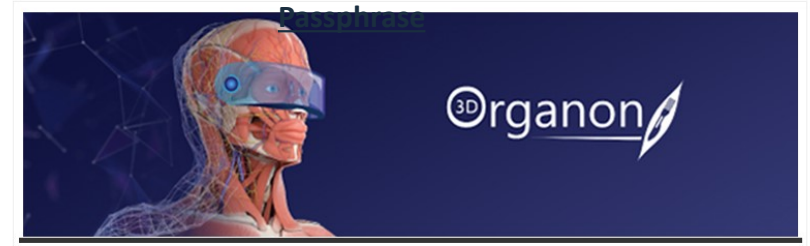
We wish you the best of luck in your preparations and look forward to your successful performance in this innovative examination experience!

Warm regards,

The Examverse Team

You will need to enter the **passphrase** to start the examination.

## Examination



Hello **James**,

We are pleased to provide you with the examination **unlock passphrase**. Please note that this passphrase should remain confidential and should not be shared with anyone.

Exam Title: Gross Anatomy

Examination Unlock Passphrase: **lArSym**

This passphrase will grant you access to the examination at the designated time. We kindly ask that you keep it secure and do not share it with anyone to ensure the integrity of the examination process.

If you have any questions or concerns regarding the examination or the passphrase, please feel free to contact us.

Wishing you the very best of luck on your examination!

Regards,

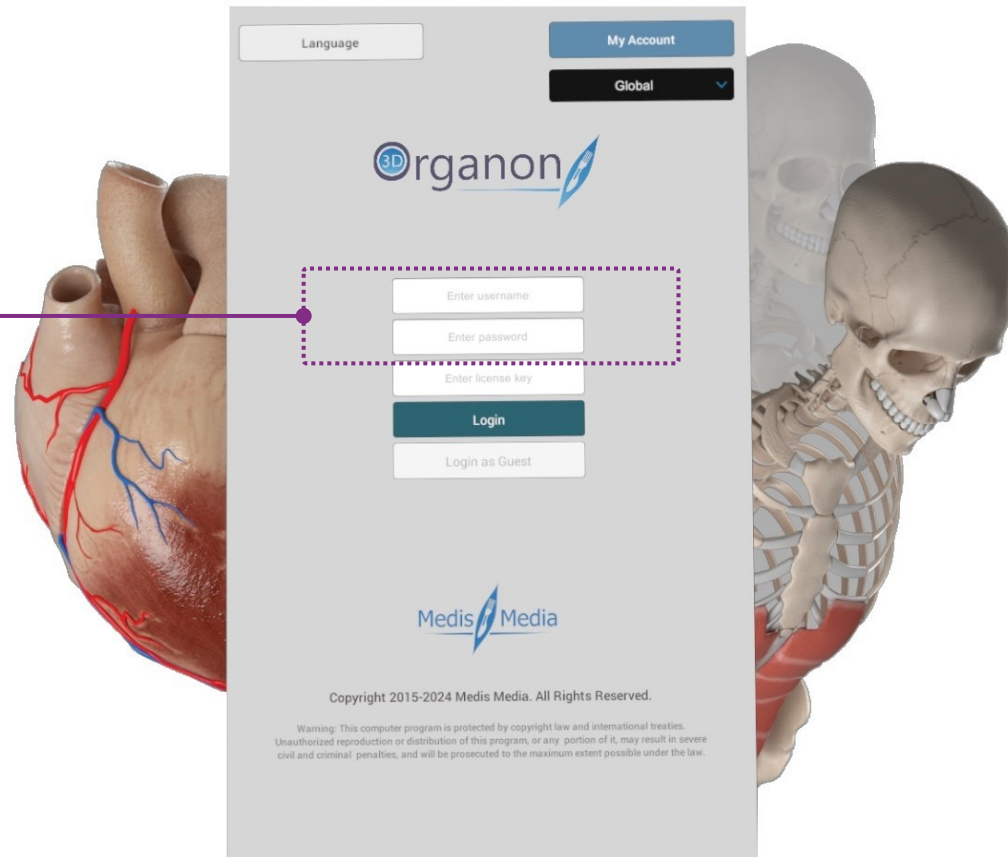
The Examverse Team

# 3D Organon XR installation instructions



- ❑ To get started, click [here](#) for **Standalone VR** installation instructions and [here](#) for **PC VR** installation instructions.
- ❑ Once installed, launch 3D Organon and log in with your email and password (no license key is required).

Your login credentials are the same as those used for the Examverse platform. Click [here](#) for more details.

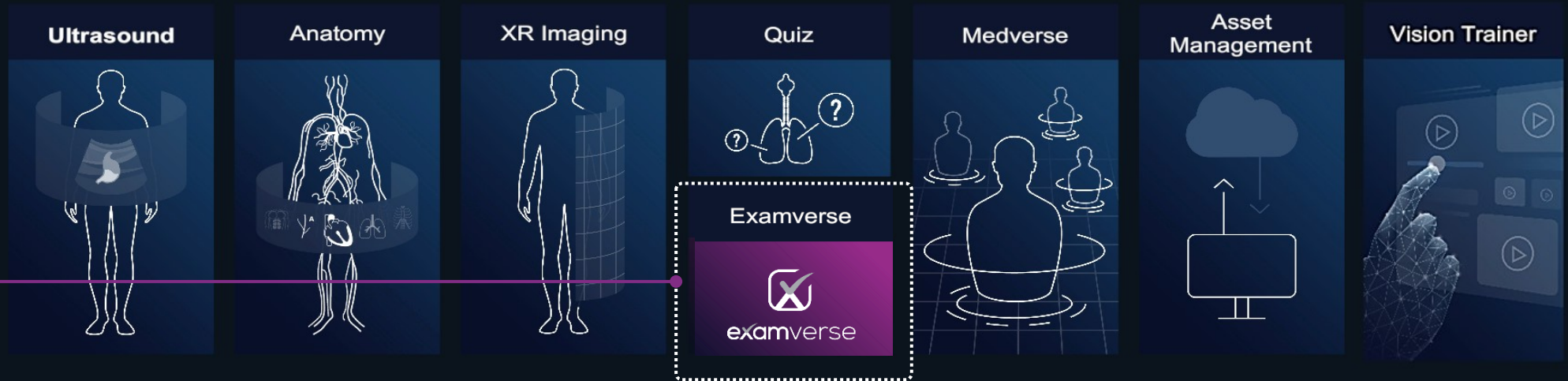




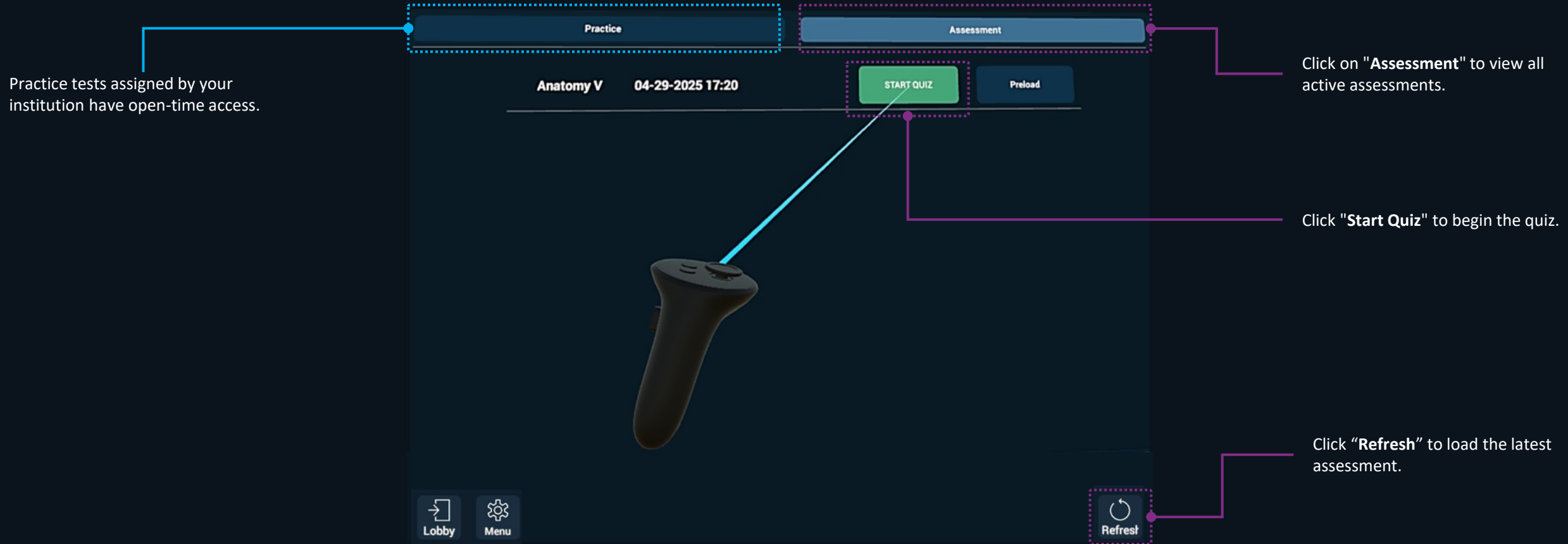
# The 3D Organon XR Lobby



Click the Examverse module to access the Dashboard.



# The 3D Organon XR Examverse Dashboard



# Example of an Anatomy 3D Question



Always check the remaining time and the number of unanswered questions.

01: 53 : 35

Question 1/5

Answer is applied

What bone occupies a lateral position in the leg?

Tibia

Navicular

Femur

Fibula, R

Talus

PREVIOUS

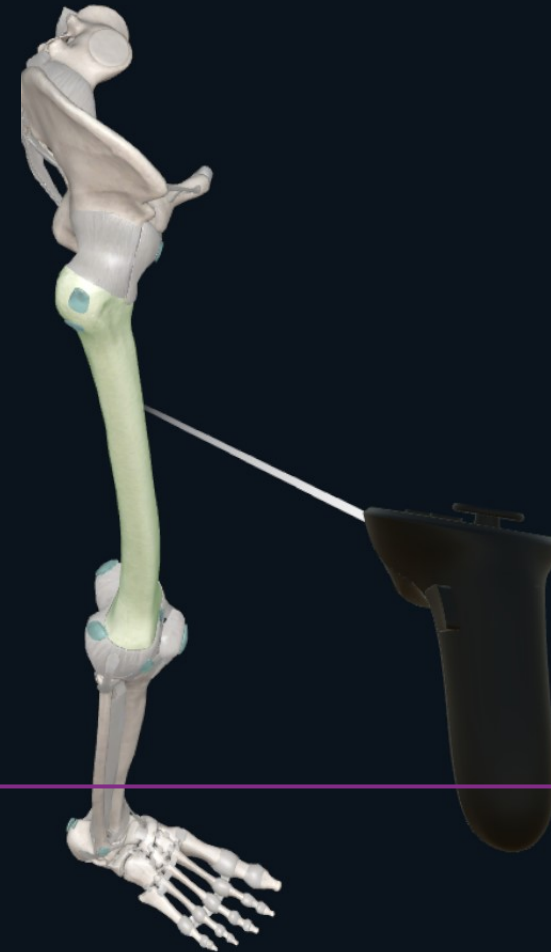
APPLY ANSWER

NEXT

Hide

Back

SUBMIT



To select the potential correct answer, you need to perform an interactive exploration, select a structure on the model and press the 'APPLY ANSWER' button. Then by clicking 'NEXT' the next question appears.

Each question includes a stem, a lead-in, and distractors. Distractor options are provided for reference only.

There are questions where further exploration and virtual dissection is required. Click on the "Hide" button (as many times as needed) to expose deeper anatomical structures for selection.


# Example of a Multiple-choice Question



Select the correct answer, then click  
'NEXT' to proceed to the next question.

Question 2/5 01:51:58 SUBMIT

From what bone does the sternocleidomastoid originate?



- A. Temporal
- B. Occipital
- C. Parietal
- D. Sphenoid
- E. Zygomatic

< PREVIOUS NEXT >

# Example of a True/False Question



Select the correct answer, then click  
'NEXT' to proceed to the next question.



# Submitting the assessment for evaluation



Are you sure you want to submit your answers for marking?  
Your exam will close, and no further changes will be permitted.

Yes

No

In the pop-up message, click 'Yes' to submit your answers.



examverse

v1.1

